

# UPP™ Semi-Rigid Pipework System

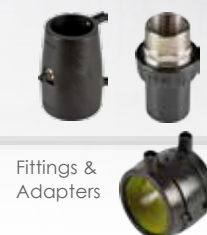
Since being introduced as the world's first electrofusion pipework system for fuel applications over thirty years ago, UPP™ brand semi-rigid pipework has become known globally as the standard for watertight electrofusion welded pipework systems. UPP™ brand pipework utilizes the advanced electrofusion welding process to effectively bond system components including pipework and containment together into one, water tight system.



Hand-Held  
Electrofusion  
Welder Unit



Electrofusion  
Entry Boot



Fittings &  
Adapters

## Highlights

- The highly efficient electrofusion welding process that connects pipe, fittings, boots and containment to create a seamless direct burial pipework system.
- The UPP™ electrofusion welding process is safe and simple to complete in any climate and virtually any weather condition. An installer simply preps the components, fits them together attaching welder leads to the fitting, and then presses a single button on the welding unit to initiate the process.
- The welder unit itself calculates the exact settings required to complete the weld, regardless of the pipework diameter or temperature, leaving no settings for the installer to input.
- UPP™ double wall semi-rigid pipe is flexible enough to coil and bend like flexible pipe, while UPP™ single wall pipe is also rigid enough to be used in place of fiberglass pipe for vapor or vent lines.
- Available in both coils and straight sticks, UPP™ pipe can accommodate the sweeping bends of a "loop" pipework system while the straight sticks make installation between dispenser sumps simple by providing a square pipe entry into containment.
- The flexibility of UPP™ double wall semi-rigid pipe allows for easy installation through existing ducting.
- As a vital component to the UPP™ pipework system, patented UPP™ electrofusion entry boots weld directly to the wall of any polyethylene sump creating a watertight seal between the pipework system and containment spaces.

## Specifications

- Pipe outer layer: High Density Polyethylene (HDPE) grade PE100
- Pipe liner layer: Ethylene vinyl alcohol (EVOH) resin liner
- Pipe intermediate layer: Tie-layer which permanently bonds HDPE outer layer to EVOH resin liner layer
- Temperature rating: -22 °F to 122 °F
- Primary pipe pressure rating: 90 Psi
- Secondary pipe pressure rating: 58 Psi
- 1½" and 2" double wall pipe bend radius: 3'3"
- 3" and 4" double wall pipe bend radius: 13'2"
- 2" single wall vent/vapor pipe bend radius: 3'3"
- 3" single wall vent/vapor pipe bend radius: 9'10"

## Approvals

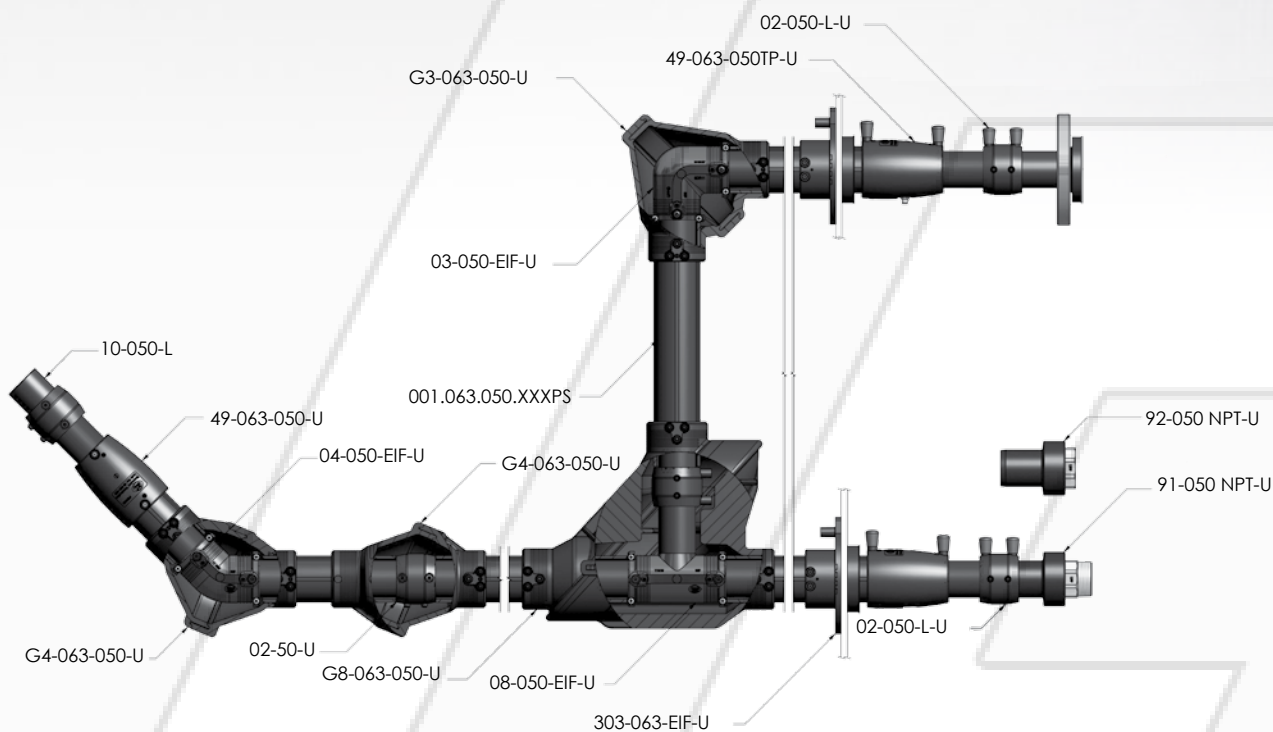
- UL-971 approved for fuels including:
  - Motor vehicle fuels typically found in consumer dispensing facilities like gasoline or diesel including blended fuels with maximum 15% MTBE, 15% Methanol or 30% Ethanol.
  - Concentrated fuels such as alternate un-blended fuels containing up to 100% concentrations of Toluene, Methanol or Ethanol.
  - High blend fuels with higher than normal gasoline blends with maximum 50% Methanol or 50% Ethanol.
  - Aviation and marine specialty fuels containing up to 100% kerosene or leaded gasoline.
- Michigan, Wisconsin, and Florida EQ-816.

Tel: 01626 201092

## Ordering Information

Model	Description	Nominal Primary Pipe		Nominal Secondary Pipe	
		ID	OD	ID	OD
001.063.050.XXXPS	1 1/2" double wall pipe	1.65"	1.97"	2.15"	2.48"
001.075.063.XXXPS	2" double wall pipe	2.08"	2.48"	2.57"	2.95"
001.110.090.019PS	3" double wall pipe	2.90"	2.98"	3.78"	4.33"
001.125.110.019PS	4" double wall pipe	3.54"	3.65"	4.40"	4.92"
001.063.019V	2" single wall pipe	2.02"	2.08"		
001.090.019V	3" single wall pipe	2.90"	2.98"		

### 1 1/2" Secondary Contained Pipework System



Model	Description	Unit
001.063.050.028PS	1 1/2" double wall pipe	28' stick
001.063.050.033PS	1 1/2" double wall pipe	33' stick
001.063.050.165PS	1 1/2" double wall pipe	165' coil

Model	Description
02-50-U	1 1/2" primary welding coupler

Model	Description
02-050-L-U	1 1/2" primary welding coupler, long

Model	Description
03-050-EIF-U	1 1/2" primary electrofusion 90° elbow fitting



**Tel: 01626 201092**

Model	Description
03-050-L-U	1 1/2" primary plain 90° elbow fitting



Model	Description
04-050-EIF-U	1 1/2" primary electrofusion 45° elbow fitting



Model	Description
04-050-L	1 1/2" primary plain 45° elbow fitting



Model	Description
08-050-EIF-U	1 1/2" single wall electrofusion tee fitting



Model	Description
08-050-L	1 1/2" primary plain tee fitting



Model	Description
09-063-050-L	2" x 1 1/2" primary plain reducer fitting



Model	Description
10-050-L	1 1/2" primary plug



Model	Description
02-63SC-U	1 1/2" secondary welding coupler



Model	Description
49-063-050-U	1 1/2" secondary electrofusion reducer fitting
49-063-050TP-U	1 1/2" secondary electrofusion reducer fitting with test port



Model	Description
49-110-063SC-U	4" x 1 1/2" secondary electrofusion reducer fitting



Model	Description
91-050 SS NPT-U	Stainless steel 1 1/2" (pipe) x 1 1/2" NPT male threaded termination fitting
91-050 NPT-U	1 1/2" (pipe) x 1 1/2" NPT male threaded termination fitting



Tel: 01626 201092

Model	Description
92-050 NPT-U	1 1/2" (pipe) x 1 1/2" NPT female threaded termination fitting

Model	Description
11.50 NPT	1 1/2" (pipe) x 2" NPT female threaded termination fitting w/o hex

Model	Description
92-050 UF NPT-U	1 1/2" (pipe) x 1 1/2" NPT union adapter termination fitting
11.50G	1 1/2" gasket

Model	Description
HEX 2	2" NPT X 1 1/2" NPT hex adapter

Model	Description
303-063-EIF-U	1 1/2" double wall / 2" single wall electrofusion entry boot
304-110-063-TP*	1 1/2" double wall ducted entry boot with ducting test port

\*For use with UPP 4" ducting.

Model	Description
G3-063-050-U	SC 1 1/2" Gemini 90° Elbow

Model	Description
G4-063-050-U	SC 1 1/2" Gemini 45° Elbow OR SC 1 1/2" Gemini Inline Joint

Model	Description
G8-063-050-U	SC 1 1/2" Gemini Tee





## 2" Primary Pipework System



Model	Description	Unit
001.063.019V	2" single wall pipe	19' stick

Model	Description
02-63-U	2" primary welding coupler

Model	Description
02-063-L-U	2" primary welding coupler, long

Model	Description
03-063-EIF-U	2" primary electrofusion 90° elbow fitting

Model	Description
03-063-L	2" primary plain 90° elbow fitting

Model	Description
04-063-EIF-U	2" primary electrofusion 45° elbow fitting

Model	Description
04-063-L	2" primary plain 45° elbow fitting

Model	Description
08-063-EIF-U	2" single wall electrofusion tee fitting

Model	Description
08-063-L	2" primary plain tee fitting



Tel: 01626 201092

Model	Description
09-090-063-EIF-U	3" x 2" primary electrofusion reducer fitting



Model	Description
09-090-063-L-U	3" x 2" primary plain reducer fitting



Model	Description
09-110-063-L-U	4" x 2" primary plain reducer fitting



Model	Description
08-090-063-U	3" x 3" x 2" primary plain reducing tee



Model	Description
10-063-L-U	2" primary plug



Model	Description
91-063 SS NPT-U	Stainless steel 2" (pipe) x 2" NPT male threaded termination fitting
91-063-1 NPT-U	2" (pipe) x 1½" NPT male threaded termination fitting
91-063 NPT-U	2" (pipe) x 2" NPT male threaded termination fitting



Model	Description
92-063-1 NPT-U	2" (pipe) x 1½" NPT female threaded termination fitting
92-063 NPT-U	2" (pipe) x 2" NPT female threaded termination fitting



Model	Description
90-063 QL-U	2" (pipe) x 2" quick release termination fitting



Model	Description
92-063 UF NPT-U	2" (pipe) x 2" NPT union adapter termination fitting
11.63G	2" gasket



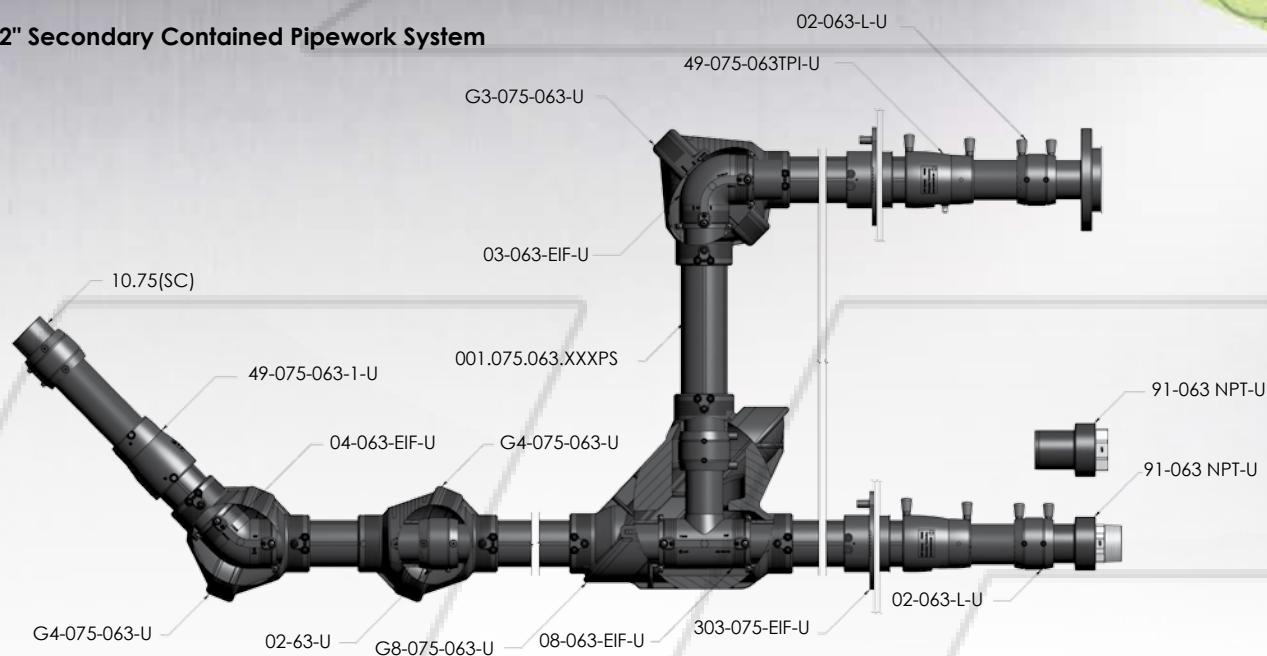
Model	Description
303-063-EIF-U	1 1/2" double wall/ 2" single wall electrofusion entry boot



Model	Description
FEB-075-M	2" (pipe) fiberglass entry boot



## 2" Secondary Contained Pipework System



Model	Description	Unit
001.075.063.028PS	2" double wall pipe	28' stick
001.075.063.033PS	2" double wall pipe	33' stick
001.075.063.038PS	2" double wall pipe	38' stick
001.075.063.100PS	2" double wall pipe	100' coil
001.075.063.165PS	2" double wall pipe	165' coil

Model	Description
02-63-U	2" primary welding coupler

Model	Description
02-063-L-U	2" primary welding coupler, long

Model	Description
02-75SC-U	2" secondary welding coupler

Model	Description
03-063-EIF-U	2" primary electrofusion 90° elbow fitting

Model	Description
04-063-EIF-U	2" primary electrofusion 45° elbow fitting

Model	Description
08-063-EIF-U	2" single wall electrofusion tee fitting

Model	Description
49-075-063-1-U	2" secondary electrofusion reducer fitting
49-075-063TPI-U	2" secondary electrofusion reducer fitting with test port



Model	Description
49-110-75SC-U	4" x 2" secondary electrofusion reducer fitting



Model	Description
09-110-75SC-U	4" x 2" secondary plain reducer fitting



Model	Description
10.75(SC)	2" secondary plug



Model	Description
91-063 SS NPT-U	Stainless steel 2" (pipe) x 2" NPT male threaded termination fitting
91-063-1 NPT-U	2" (pipe) x 1½" NPT male threaded termination fitting
91-063 NPT-U	2" (pipe) x 2" NPT male threaded termination fitting



Model	Description
92-063-1 NPT-U	2" (pipe) x 1½" NPT female threaded termination fitting
92-063 NPT-U	2" (pipe) x 2" NPT female threaded termination fitting



Model	Description
90-063 QL-U	2" (pipe) x 2" quick release termination fitting



Model	Description
92-063 UF NPT-U	2" (pipe) x 2" NPT union adapter termination fitting
11.63G	2" gasket



Model	Description
303-075-EIF-U	2" double wall electrofusion entry boot
304-110-075-TP*	2" double wall ducted entry boot with ducting test port

\*For use with UPP 4" ducting.



Model	Description
FEB-075-M	2" (pipe) fiberglass entry boot



Model	Description
G3-075-063-U	SC 2" Gemini 90° Elbow



Model	Description
G4-075-063-U	SC 2" Gemini 45° Elbow OR SC 2" Gemini Inline Elbow



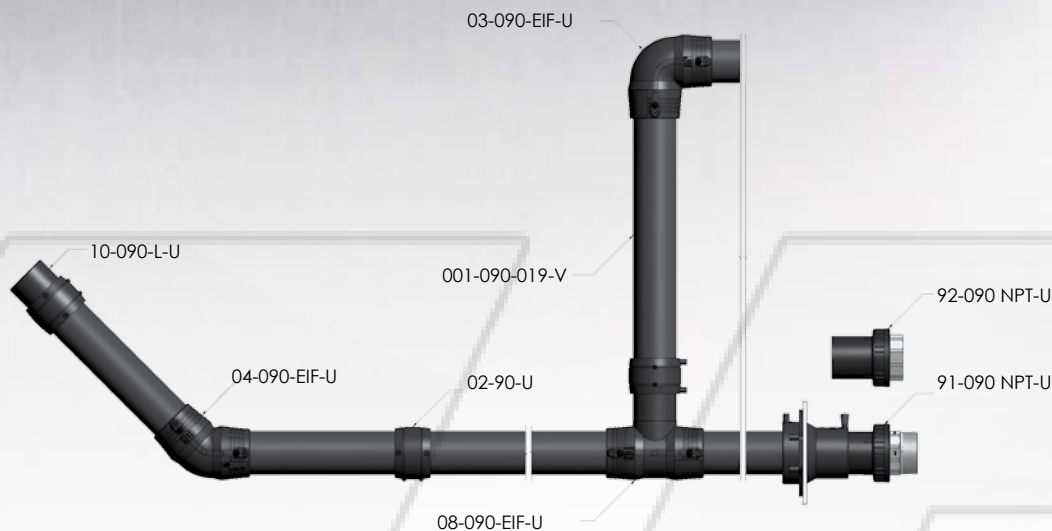
Model	Description
G8-075-063-U	SC 2" Gemini Tee



Tel: 01626 201092



### 3" Primary Pipework System



Model	Description	Unit
001.090.019V	3" single wall vent pipe	19' stick

Model	Description
02-90-U	3" primary welding coupler

Model	Description
03-090-EIF-U	3" primary electrofusion 90° elbow fitting

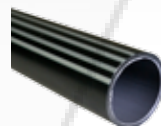
Model	Description
03-090-L	3" primary plain 90° elbow fitting

Model	Description
04-090-EIF-U	3" primary electrofusion 45° elbow fitting

Model	Description
04-090-LS-4-U	3" primary plain elbow 45° fitting

Model	Description
08-090-EIF-U	3" single wall electrofusion tee fitting

Model	Description
08-090-L-U	3" primary plain tee fitting



**Tel: 01626 201092**

Model	Description
09-110-090EIF-U	4" x 3" primary electrofusion reducer fitting



Model	Description
10-090-L-U	3" primary plug



Model	Description
03-090-LS-4-U	3" lined primary 90° elbow fitting



Model	Description
04-090-LS-4-U	3" lined primary 45° elbow fitting



Model	Description
08.90.L-1	3" primary tee fitting



Model	Description
91-090 SS NPT-U	Stainless steel 3" (pipe) x 3" NPT male threaded termination fitting
91-090 NPT-U	3" (pipe) x 3" NPT male threaded termination fitting



Model	Description
92-090 NPT-U	3" (pipe) x 3" NPT female threaded termination fitting



Model	Description
90-090 QL-U	3" (pipe) x 3" quick release termination fitting



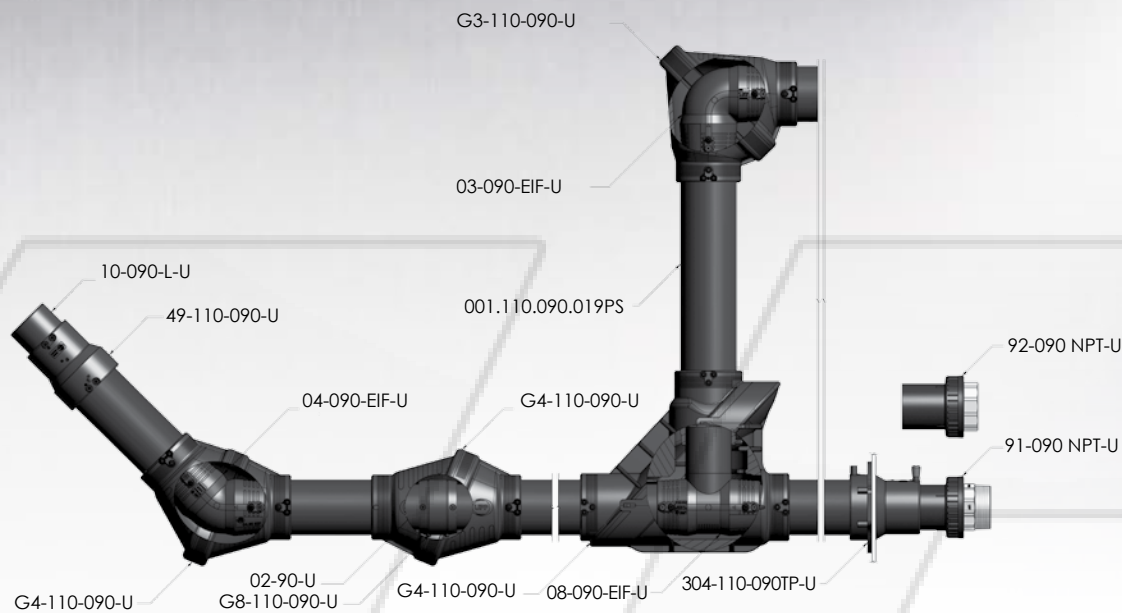
Model	Description
304-110-90-U	3" electrofusion entry boot



Model	Description
FEB-110-M	3" electrofusion fiberglass entry boot for use with 3" pipework systems



### 3" Secondary Contained Pipework System



Model	Description	Unit
001.110.090.019PS	3" double wall pipe	19' stick



Model	Description
02-90-U	3" primary welding coupler



Model	Description
02-110SC-U	3" secondary welding coupler



Model	Description
03-090-EIF-U	3" primary electrofusion 90° elbow fitting



Model	Description
04-090-EIF-U	3" primary electrofusion 45° elbow fitting



Model	Description
08-090-EIF-U	3" single wall electrofusion tee fitting



Tel: 01626 201092

Model	Description
49-110-090-U	4" x 3" secondary electrofusion reducer fitting
49-110-090TP-U	4" x 3" secondary electrofusion reducer fitting with test port



Model	Description
91-090 NPT-U	3" (pipe) x 3" NPT male threaded termination fitting



Model	Description
92-090 NPT-U	3" (pipe) x 3" NPT female threaded termination fitting



Model	Description
10-090-L-U	3" primary plug



Model	Description
304-110-090-U	3" double wall electrofusion entry boot with integrated termination fitting
304-110-090TP-U	3" double wall electrofusion entry boot with integrated termination fitting and test port



Model	Description
FEB-110-M	3" electrofusion fiberglass entry boot for use with 3" secondary contained pipework systems



Model	Description
G3-110-090-U	SC 3" Gemini 90° Elbow



Model	Description
G4-110-090-U	SC 3" Gemini 45° Elbow OR SC 3" Gemini Inline Joint

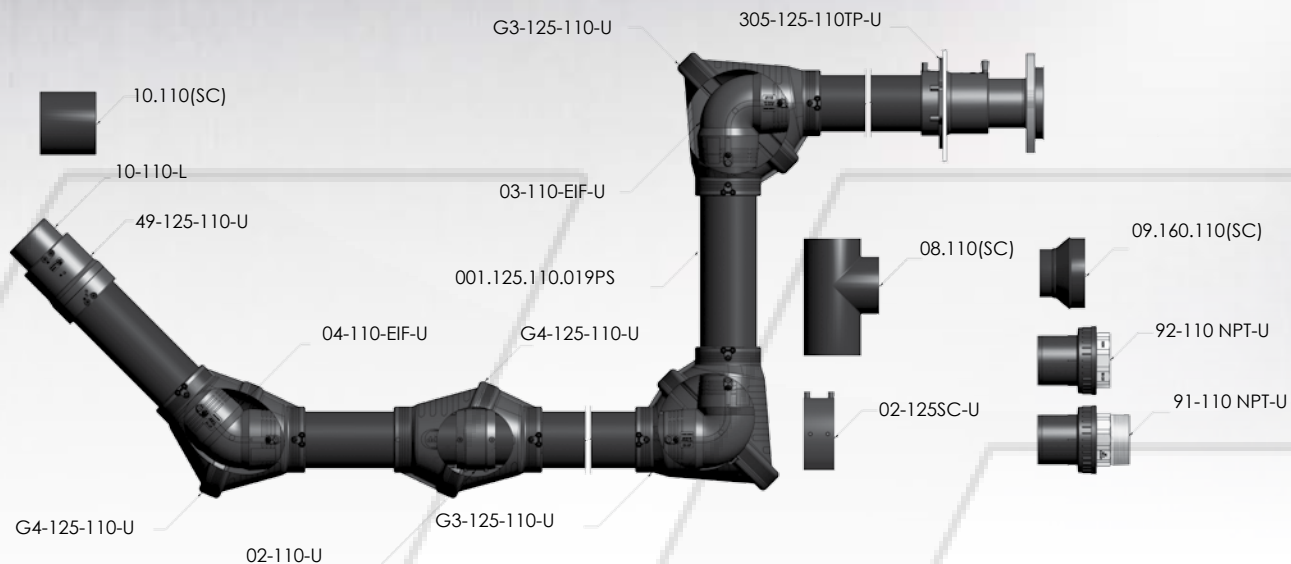


Model	Description
G8-110-090-U	SC 3" Gemini Tee





## 4" Secondary Contained Pipework System



Model	Description	Unit
001.125.110.019PS	4" double wall pipe	19' stick

Model	Description
02-110-U	4" primary welding coupler

Model	Description
02-125SC-U	4" secondary welding coupler

Model	Description
03-110-EIF-U	4" primary electrofusion 90° elbow fitting

Model	Description
03-110-LS-4-U	4" primary plain 90° elbow fitting

Model	Description
04-110-EIF-U	4" primary electrofusion 45° elbow fitting

Model	Description
04-110-LS-4-U	4" primary plain elbow 45° fitting

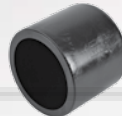


Tel: 01626 201092

Model	Description
08-110-EIF-U	4" single wall electrofusion tee fitting



Model	Description
10-110-L-U	4" primary plug



Model	Description
03.110(SC)	4" secondary 90° elbow fitting



Model	Description
03-110-LS-4-U	4" lined primary 90° elbow fitting



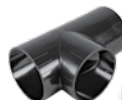
Model	Description
04.110(SC)	4" secondary 45° elbow fitting



Model	Description
04-110-LS-4-U	4" lined primary 45° elbow fitting



Model	Description
08.110(SC)	4" secondary tee fitting



Model	Description
08-110-L-U	4" primary tee fitting



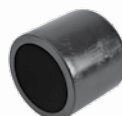
Model	Description
49-125-110-U	5" x 4" secondary electrofusion reducer fitting
49-125-110TP-U	5" x 4" secondary electrofusion reducer fitting with test port



Model	Description
09.160.110(SC)	6" x 4" secondary plain reducer fitting



Model	Description
10.110(SC)	4" secondary plug



Tel: 01626 201092

Model	Description
91-110 NPT-U	4" (pipe) x 4" NPT male threaded termination fitting



Model	Description
92-110 NPT-U	4" (pipe) x 4" NPT female threaded termination fitting



Model	Description
305-125-110-U	4" double wall electrofusion entry boot with integrated termination fitting
305-125-110TP-U	4" double wall electrofusion entry boot with integrated termination fitting and test port



Model	Description
FEB-S-125	4" electrofusion fiberglass entry boot for use with 4" pipework systems



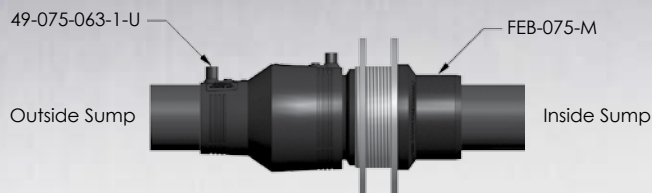
Model	Description
G3-125-110-U	SC 4" Gemini 90° Elbow



Model	Description
G4-125-110-U	SC 4" Gemini 45° Elbow OR SC 4" Gemini Inline Joint



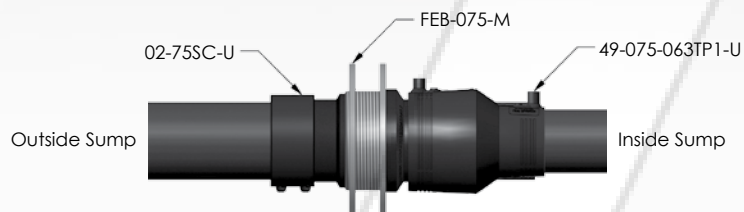
### 1½" Secondary Contained Fiberglass Sump Entry Fittings



### 2" Primary Fiberglass Sump Entry Fittings



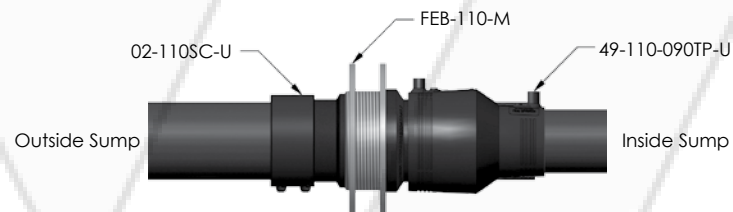
### 2" Secondary Contained Fiberglass Sump Entry Fittings



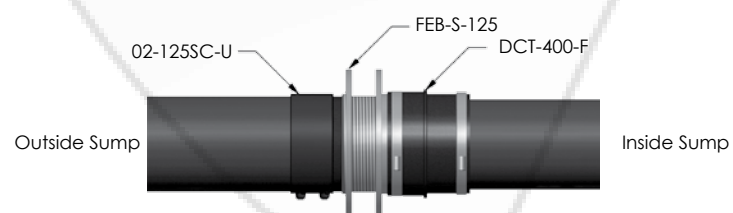
### 3" Primary Fiberglass Sump Entry Fittings



### 3" Secondary Contained Fiberglass Sump Entry Fittings



### 4" Secondary Contained Fiberglass Sump Entry Fittings



A Franklin Fueling Systems Brand

frankinfueling.com

3760 Marsh Rd. • Madison, WI 53718, USA

Tel: +1 608 838 8786 • Fax: +1 608 838 6433

Tel: USA & Canada +1 800 225 9787 • Tel: UK +44 (0)1473 243300

Tel: Mex 001 800 738 7610 • Tel: FR +33 (0)1 69 21 41 41 • Tel: CH +86 10 8565 4566

FFS-0164 08-14